

HIGH-RATE START-STOP SODIUM-ION BATTERY FOR AUTOMOBILES

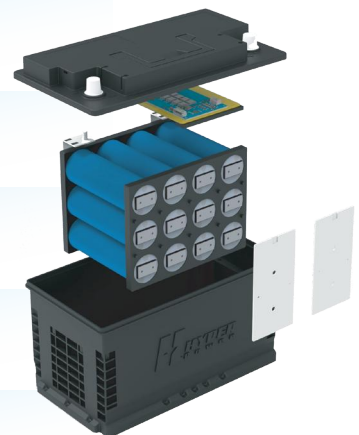
- H5-60-S
- H6-70-S
- H7-80-S
- H8-92-S
- H9-105-S
- M42-36-S
- N55-45-S
- Q85-70-S
- S95-70-S
- T110-80-S

Na⁺



PASSENGER CAR

- 1 3+ YEARS LONG LIFE
- 2 4000 CYCLES
- 3 -40~80°C
- 4 60% LIGHTER THAN TRADITIONAL BATTERY
- 5 SEALED MAINTENCE FREE
- 6 VIBRATION RESISTANCE

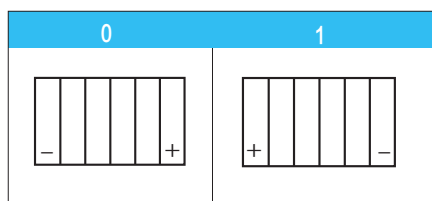


| ITEM | H5-60-S | H6-70-S | H7-80-S | H8-92-S |
|---------------|-----------------|-----------------|-----------------|-----------------|
| Size | L2 | L3 | L4 | L5 |
| Dimension(mm) | 245x175x189x189 | 280x175x189x189 | 315x175x189x189 | 352x175x189x189 |
| Voltage(V) | 12 | 12 | 12 | 12 |
| Cell Type | Sodium-Ion Cell | | | |
| CCA | 750 | 850 | 950 | 1050 |
| Layout | 0 | 0 | 0 | 0 |
| Terminal | A | A | A | A |

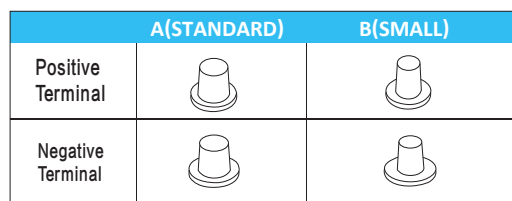
| ITEM | H9-105-S | M42-36-S | N55-45-S |
|---------------|-----------------|-----------------|-----------------|
| Size | L6 | B20 | B24 |
| Dimension(mm) | 395x175x189x189 | 194x126x200x221 | 236x128x200x221 |
| Voltage(V) | 12 | 12 | 12 |
| Cell Type | Sodium-Ion Cell | | |
| CCA | 1200 | 700 | 720 |
| Layout | 0 | 0/1 | 0/1 |
| Terminal | A | A/B | A/B |

| ITEM | Q85-70-S | S95-70-S | T110-80-S |
|---------------|-----------------|-----------------|-----------------|
| Size | D23 | D26 | D31 |
| Dimension(mm) | 230x172x203x223 | 259x172x203x223 | 305x172x203x223 |
| Voltage(V) | 12 | 12 | 12 |
| Cell Type | Sodium-Ion Cell | | |
| CCA | 850 | 1000 | 1100 |
| Layout | 0/1 | 0/1 | 0/1 |
| Terminal | A | A | A |

Layout



Terminal



INTELLIGENT TRUCK LITHIUM BATTERY

- IPLB-80
- IPLB-100
- IPLB-180
- IPLB-350
- IPLB-360



Electrophoretic Coating Iron Shell

Powder-coated: anti-fire-resistance, insulation, anti-corrosion, long service life



Waterproof

IP67- effectively prevents moisture-induced short-circuit risks inside the battery.



Anti-Vibration Design

Certified by automotive-grade laboratory vibration tests, ensuring enhanced safety.



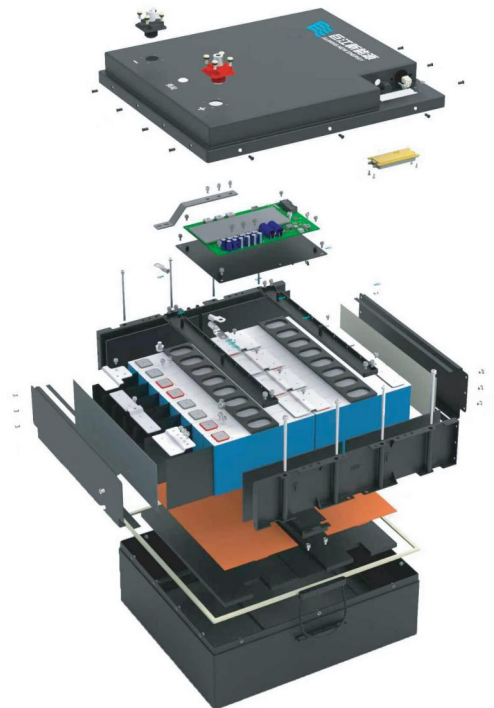
Restart

Battery save SOC 10% ensure the start of the car



APP+GPRS

Remote control, real-time monitoring, intelligent positioning, battery protection, intelligent interconnection



| ITEM | IPLB-80 | IPLB-100 | IPLB-180 | IPLB-350 | IPLB-360 |
|-----------------------------------|---|-------------|-------------|-------------|-------------|
| Nominal Voltage | 25.6V | 25.6V | 25.6V | 25.6V | 25.6V |
| Cell Specification | LiFePO4 | | | | |
| Rated Capacity | 54AH | 81AH | 132.5AH | 280Ah | 314Ah |
| Cell Configuration | 8S2P | 8S3P | 8S1P | 8S1P | 8S1P |
| Battery Capacity | 1382Wh | 2073Wh | 3392Wh | 7168Wh | 8038Wh |
| Max.Peak Current | 1800A | 2000A | 2500A | 2500A | 2500A |
| Max. Continuous Discharge Current | 54A | 100A | 130A | 150A | 150A |
| Charging Cutoff Voltage | 29.2V | 29.2V | 29.2V | 29.2V | 29.2V |
| Discharging Cutoff Voltage | 25V | 25V | 25V | 25V | 25V |
| Terminal | M8 | | | | |
| Working Temperature | -30°C~65°C | | | | |
| Storage temperature | 15°C~35°C | | | | |
| Restart | Reserve 10% of the battery capacity for emergency starting of the vehicle | | | | |
| Optional Function | Bluetooth/4G | | | | |
| Upgrade | CAN/4G | | | | |
| Cycle Life | ≥ 6000 cycles @90%DOD | | | | |
| Warranty | 5 Years | | | | |
| IP | IP67 | IP67 | IP67 | IP67 | IP67 |
| N.Weight | 20±0.5Kg | 30±0.5Kg | 35±0.5Kg | 66.5±0.5Kg | 66.5±0.5Kg |
| Dimension(L/W/H):MM | 345*262*210(241) | 443*263*216 | 457×292×202 | 505*440*229 | 505*440*229 |
| Certification | IEC 63057 & UN38.3 | | | | |

Bluetooth/4G



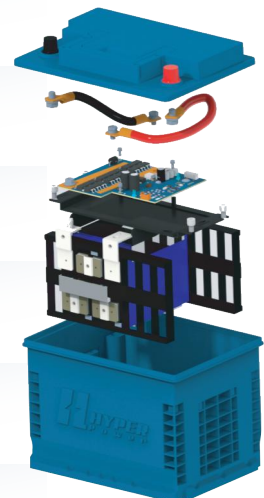
HIGH-RATE START-STOP LIFEPO4 BATTERY FOR AUTOMOBILES

- CLB-60 H5
- CLB-105 H9
- CLB-60 Q85
- CLB-70 H6
- CLB-36 M42
- CLB-70 S95
- CLB-80 H7
- CLB-45 N55
- CLB-80 T110
- CLB-92 H8



PASSENGER CAR

- 1 3⁺ YEARS LONG LIFE
- 2 3500 CYCLES
- 3 -20~60°C
- 4 LIGHTER THAN TRADITIONAL BATTERY
- 5 SEALED MAINTENCE FREE
- 6 VIBRATION RESISTANCE



| ITEM | CLB-60 H5 | CLB-70 H6 | CLB-80 H7 | CLB-92 H8 |
|---------------|--|-----------------|-----------------|-----------------|
| Size | L2 | L3 | L4 | L5 |
| Dimension(mm) | 245x175x189x189 | 280x175x189x189 | 315x175x189x189 | 352x175x189x189 |
| Voltage(V) | 12.8 | 12.8 | 12.8 | 12.8 |
| Cell Type | LiFePO4/LFP (Lithium Iron Phosphate Battery) | | | |
| N.Weight(Kg) | 6.5±0.2 | 6.8±0.2 | 7.0±0.2 | 9.6±0.2 |
| CCA | 700 | 750 | 850 | 950 |
| Layout | 0 | 0 | 0 | 0 |
| Terminal | A | A | A | A |

| ITEM | CLB-105 H9 | CLB-36 M42 | CLB-45 N55 |
|---------------|--|-----------------|-----------------|
| Size | L6 | B20 | B24 |
| Dimension(mm) | 395x175x189x189 | 194x126x200x221 | 236x128x200x221 |
| Voltage(V) | 12.8 | 12.8 | 12.8 |
| Cell Type | LiFePO4/LFP (Lithium Iron Phosphate Battery) | | |
| N.Weight(Kg) | 9.7±0.2 | 3.4±0.2 | 3.5±0.2 |
| CCA | 1050 | 600 | 620 |
| Layout | 0 | 0/1 | 0/1 |
| Terminal | A | A/B | A/B |

| ITEM | CLB-60 Q85 | CLB-70 S95 | CLB-80 T110 |
|---------------|--|-----------------|-----------------|
| Size | D23 | D26 | D31 |
| Dimension(mm) | 230x172x203x223 | 259x172x203x223 | 305x172x203x223 |
| Voltage(V) | 12.8 | 12.8 | 12.8 |
| Cell Type | LiFePO4/LFP (Lithium Iron Phosphate Battery) | | |
| N.Weight(Kg) | 6.3±0.2 | 6.4±0.2 | 9.6±0.2 |
| CCA | 750 | 800 | 1000 |
| Layout | 0/1 | 0/1 | 0/1 |
| Terminal | A | A | A |